

Windows System Microsoft Project Professional 2019 Retail Box Package 64 Bit 1 PC Lifetime

Our Product Introduction

for more products please visit us on computersoftware-systems.com

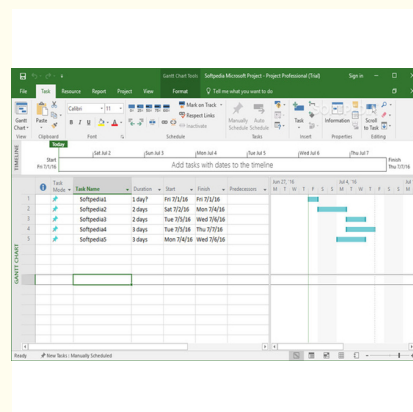
Basic Information

- Place of Origin: Ireland
- Brand Name: Microsoft
- Certification: Microsoft Certified
- Model Number: Project Professional 2019
- Minimum Order Quantity: 10pcs
- Price: Negotiable
- Packaging Details: Factory Sealed Retail box / OEM
- Delivery Time: 3-7 work days
- Payment Terms: T/T, Western Union, MoneyGram, Paypal, Skrill
- Supply Ability: 5000pcs/week



Product Specification

- Installation Type: Locally Installed
- Sticker Only: Support
- Email Delivery Way: Available
- Microsoft Edition: Professional
- Activation Type: Online
- System Type: Windows
- Processor: 1.6 Gigahertz (GHz)
- License Qty: 4.0 GB
- Highlight: **Windows Microsoft Project Professional 2019, Locally installed Microsoft Project Professional 2019**
, microsoft project professional 2019 software



Product Description

Microsoft Project Professional 2019 Retail Box Package 64 Bit 1 PC Lifetime

Microsoft Corporation

Pre-built templates help you get your project started on the right track
 Sync with Project Online and Project Server
 Submit timesheets to capture time spent on project and non-project work
 Run what-if scenarios to make the most of your task assignments
 Auto-populate start and end dates based on dependencies
 Visually represent complex schedules with built-in multiple timelines
 Licensed for 1 PC
 Supports Long-Term Servicing Channel (LTSC) and is compatible with Office LTSC and Office 2021

What is Microsoft Project?

Microsoft Project is a project management software product, developed and sold by Microsoft. It is designed to assist a project manager in developing a schedule, assigning resources to tasks, tracking progress, managing the budget, and analyzing workloads.

Microsoft Project was the company's third Microsoft Windows-based application. Within a few years after its launch, it became the dominant PC-based project management software.

It is part of the Microsoft Office family but has never been included in any of the Office suites. It is available currently in two editions, Standard and Professional. Microsoft Project's proprietary file format is .mpp.

Microsoft Project and Microsoft Project Server are the cornerstones of the Microsoft Office enterprise project management (EPM) product.

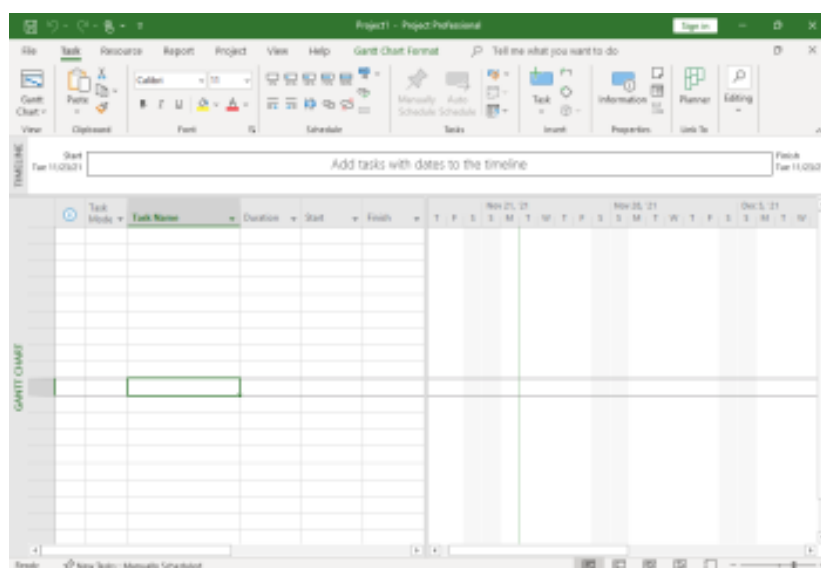
Features:

The project creates budgets based on assignment work and resource rates. As resources are assigned to tasks and assignment work estimated, the program calculates the cost, equal to the work times the rate, which rolls up to the task level and then to any summary tasks and finally to the project level. Resource definitions (people, equipment and materials) can be shared between projects using a shared resource pool. Each resource can have its own calendar, which defines what days and shifts a resource is available. Resource rates are used to calculate resource assignment costs which are rolled up and summarized at the resource level. Each resource can be assigned to multiple tasks in multiple plans and each task can be assigned multiple resources, and the application schedules task work based on the resource availability as defined in the resource calendars. All resources can be defined in label without limit. Therefore, it cannot determine how many finished products can be produced with a given amount of raw materials. This makes Microsoft Project unsuitable for solving problems of available materials constrained production. Additional software is necessary to manage a complex facility that produces physical goods.

The application creates critical path schedules, and critical chain and event chain methodology third-party add-ons also are available. Schedules can be resource leveled, and chains are visualized in a Gantt chart. Additionally, Microsoft Project can recognize different classes of users. These different classes of users can have differing access levels to projects, views, and other data. Custom objects such as calendars, views, tables, filters, and fields are stored in an enterprise global which is shared by all users.

Requirements

Processor	1.6 gigahertz (GHz) or faster, 2-core
Operating system	Windows 11, Windows 10, Windows Server 2019
Memory	4 GB (64bit), 2 GB (32bit) RAM
Hard disk space	4 GB available disk space
Display	1280 x 768 screen resolution
Graphics	DirectX 10 graphics card for graphics hardware acceleration





86-13539872669



sales@hkminko.com



computersoftware-systems.com

Huaqiang North ,Futian district,Shenzhen City,China